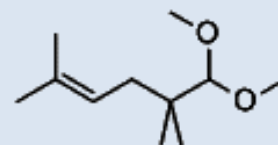


PRODUCT SPECIFICATION

METHYL PAMPLEMOUSSE

Code	02038
CAS	67674-46-8
EINECS	266-885-2
FEMA No	-
Structural Formula	C ₁₁ H ₂₂ O ₂
Molecular Weight	186.29
Tariff Number	2901299090



SENSORY DATA

Appearance	Colourless clear liquid
Odor	Fresh citrus grapefruit peel soapy woody green violet

ANALYTICAL DATA

Item	Standard
Refractive Index (20°C)	1.436-1.442
Refractive Index (25°C)	-
Relative Density(20°C)	0.875-0.879
Relative Density(25°C)	-
Acid Value (KOH mg/g)	-
Melting Point(°C)	-
Water (%)	-
Optical Rotation(20°C)	-
PURITY (%)	≥98.0
Solubility	-

OTHER DATA

Flash Point	181.00 °F
Shelf Life	12 months
Storage Condition	Store in a cool, dry, well-ventilated area away from incompatible substances. A refrigerated room would be preferable.
Issue Date	8/1/2018

This specification applies to the recommended conditions for the duration of the shelf life. The above specification is subject to change upon further notice. Specification revisions may be required by various factors including changing regulations and individual product characteristics.