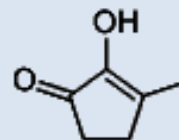


## PRODUCT SPECIFICATION

### METHYL CYCLOPENTENOLONE

<b>Code</b>	01032
<b>CAS</b>	80-71-7
<b>EINECS</b>	201-303-2
<b>FEMA No</b>	2700
<b>Structural Formula</b>	C <sub>6</sub> H <sub>8</sub> O <sub>2</sub>
<b>Molecular Weight</b>	112.13
<b>Tariff Number</b>	2914299090



#### SENSORY DATA

<b>Appearance</b>	White to pale yellow crystalline powder
<b>Odor</b>	Nutty, maple-licorice aroma in dilute soln

#### ANALYTICAL DATA

Item	Standard
Refractive Index (20°C)	-
Refractive Index (25°C)	-
Relative Density(20°C)	-
Relative Density(25°C)	-
Acid Value (KOH mg/g)	-
Melting Point(°C)	104-108
Arsenic(mg/kg)	0-3
Water (%)	<0.5
Cadmium(mg/kg)	0-1
Mercury(mg/kg)	0-1
Lead(mg/kg)	0-10
Optical Rotation(20°C)	-
Purity (%)	≥99.0
Solubility(25Deg.C)	1g in 5mL 90% alcohol

#### OTHER DATA

<b>Flash Point</b>	> 200.00 °F
<b>Shelf Life</b>	12 months
<b>Storage Condition</b>	Store in a cool, dry, well-ventilated area away from incompatible substances. A refrigerated room would be preferable.
<b>Issue Date</b>	8/1/2018

This specification applies to the recommended conditions for the duration of the shelf life. The above specification is subject to change upon further notice. Specification revisions may be required by various factors including changing regulations and individual product characteristics.