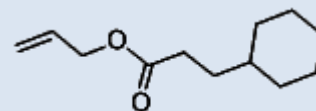


PRODUCT SPECIFICATION

ALLYL CYCLOHEXYL PROPIONATE

Code	01026
CAS	2705-87-5
EINECS	220-292-5
FEMA No	2026
Structural Formula	C ₁₂ H ₂₀ O ₂
Molecular Weight	196.29
Tariff Number	2916209090



SENSORY DATA

Appearance	Colorless clear liquid
Odor	Sweet pineapple tropical fruity candy waxy

ANALYTICAL DATA

Item	Standard
Refractive Index (20°C)	1.457-1.462
Refractive Index (25°C)	-
Relative Density(20°C)	-
Relative Density(25°C)	0.945-0.950
Acid Value (KOH mg/g)	-
Malting Point(°C)	-
Water (%)	-
Optical Rotation(20°C)	-
Purity (%)	≥99.0
Solubility	-

OTHER DATA

Flash Point	196.00 °F
Shelf Life	12 months
Storage Condition	Store in a cool, dry, well-ventilated area away from incompatible substances. A refrigerated room would be preferable.
Issue Date	8/1/2018

This specification applies to the recommended conditions for the duration of the shelf life. The above specification is subject to change upon further notice. Specification revisions may be required by various factors including changing regulations and individual product characteristics.